



Oakland Public Schools

RSU #18

Oakland, ME

School Year 2023-24 Enrollment Projection Report

Grades PK-5

Copyright, New England School Development Council, 2023

Table of Contents

Section	Page
Enrollment Summary.....	1
Historical Enrollment Table.....	2
Historical Enrollment Graph.....	3
Projected Enrollment Table.....	4
Projected Enrollment Graph.....	5
Historical & Projected Enrollment Graph.....	6
Historical & Projected Enrollment in Grade Combinations Line Graph.....	7
Historical & Projected Enrollment in Grade Combinations Stacked Column Graph.....	8
Birth to Kindergarten Relationship Graph.....	9
Additional Information	10
New England's PK-12 Enrollment Trends.....	11
Methodology, Reliability and Use of this Document.....	12

Oakland, ME Grades K - 5 Enrollment Summary

NESDEC is pleased to send you this report displaying the past, present, and projected enrollments for your District. It is important to update enrollment projections every year to identify changes in enrollment patterns. Ten-year projections are designed to provide your District with yearly, up-to-date enrollment information that can be used by boards and administrators for effective planning and allocation of resources.

Included in this report are graphs representing historical and projected grade-by-grade enrollments, as well as historical and projected enrollments in grade combinations. We received the enrollment data from the District, and we assume that the method of collecting this data has been consistent from year to year.

Enrollment projections are more reliable in Years #1-4 in the future and less reliable in the “out-years.” Projections six to ten years out may serve as a guide to future enrollments and are useful for planning purposes. In light of this, NESDEC has added a “Spring Update Refresher” enrollment projection at no cost to affiliates. For more information, please refer to the Methodology, Reliability and Use of this Document section.

This is the first enrollment projection for Oakland K-5. Next fall, we can determine the accuracy of NESDEC’s projection for 2023-24.

Births remain stable.

Over the next three years, Grades K-2 enrollments are projected to decrease by 37 students and Grades 3-5 enrollments are projected to decrease by 2 students, as move through the grades.

Historical Enrollment

School District: **Oakland, ME - Grades PK - 5**

11/15/2023

Historical Enrollment By Grade																			
Birth Year	Births*	School Year	PK	K	1	2	3	4	5	6	7	8	9	10	11	12	UNGR	K-5	PK-5
2008	52	2013-14	32	72	68	79	68	68	67	0	0	0	0	0	0	0	0	422	454
2009	43	2014-15	32	71	75	58	82	73	68	0	0	0	0	0	0	0	0	427	459
2010	72	2015-16	29	57	67	71	58	81	71	0	0	0	0	0	0	0	0	405	434
2011	48	2016-17	42	61	54	78	70	61	80	0	0	0	0	0	0	0	0	404	446
2012	65	2017-18	31	82	62	50	76	76	65	0	0	0	0	0	0	0	0	411	442
2013	49	2018-19	29	69	81	58	48	81	80	0	0	0	0	0	0	0	0	417	446
2014	61	2019-20	31	66	69	81	64	56	88	0	0	0	0	0	0	0	0	424	455
2015	54	2020-21	22	65	61	71	81	68	61	0	0	0	0	0	0	0	0	407	429
2016	64	2021-22	27	72	63	58	66	85	66	0	0	0	0	0	0	0	0	410	437
2017	53	2022-23	31	51	76	66	60	73	94	0	0	0	0	0	0	0	0	420	451
2018	71	2023-24	24	62	52	79	70	62	80	0	0	0	0	0	0	0	0	405	429

*Birth data provided by Public Health Vital Records Departments in each state.

** < 10 Not reported, to protect subgroups with fewer than 10 students.

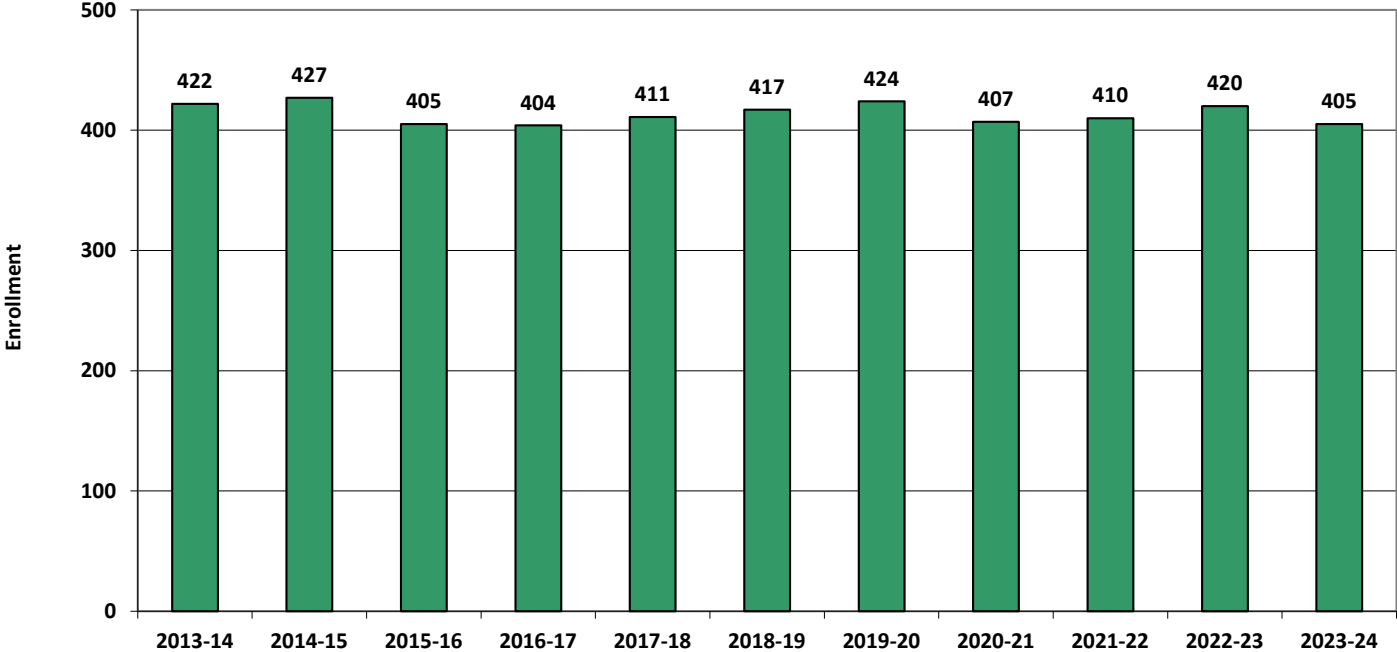
Historical Enrollment in Grade Combinations						
School Year	PK-5	K-5	PK - 2	K-2	3-5	
2013-14	454	422	251	219	203	
2014-15	459	427	236	204	223	
2015-16	434	405	224	195	210	
2016-17	446	404	235	193	211	
2017-18	442	411	225	194	217	
2018-19	446	417	237	208	209	
2019-20	455	424	247	216	208	
2020-21	429	407	219	197	210	
2021-22	437	410	220	193	217	
2022-23	451	420	224	193	227	
2023-24	429	405	217	193	212	

Historical Percentage Changes			
School Year	K-5	Diff.	%
2013-14	422		
2014-15	427	5	1.2%
2015-16	405	-22	-5.2%
2016-17	404	-1	-0.2%
2017-18	411	7	1.7%
2018-19	417	6	1.5%
2019-20	424	7	1.7%
2020-21	407	-17	-4.0%
2021-22	410	3	0.7%
2022-23	420	10	2.4%
2023-24	405	-15	-3.6%
Change		-17	-4.0%

NESDEC

Historical Enrollment

Grades K-5, School Years 2013-14 to 2023-24



Projected Enrollment

School District: **Oakland, ME - Grades PK - 5**

11/15/2023

Enrollment Projections By Grade*																				
Birth Year	Births*		School Year	PK	K	1	2	3	4	5	6	7	8	9	10	11	12	UNGR	K-5	PK-5
2018	71		2023-24	24	62	52	79	70	62	80	0	0	0	0	0	0	0	0	405	429
2019	49		2024-25	24	49	62	53	80	74	66	0	0	0	0	0	0	0	0	384	408
2020	55		2025-26	25	55	49	63	53	85	78	0	0	0	0	0	0	0	0	383	408
2021	51		2026-27	25	51	55	50	64	56	90	0	0	0	0	0	0	0	0	366	391
2022	59	(prov.)	2027-28	26	59	51	56	50	68	59	0	0	0	0	0	0	0	0	343	369
2023	57	(est.)	2028-29	26	57	59	52	56	53	72	0	0	0	0	0	0	0	0	349	375
2024	54	(est.)	2029-30	27	54	57	60	52	60	56	0	0	0	0	0	0	0	0	339	366
2025	55	(est.)	2030-31	27	55	54	58	60	55	63	0	0	0	0	0	0	0	0	345	372
2026	55	(est.)	2031-32	28	55	55	55	58	64	58	0	0	0	0	0	0	0	0	345	373
2027	56	(est.)	2032-33	29	56	55	56	55	62	68	0	0	0	0	0	0	0	0	352	381
2028	56	(est.)	2033-34	30	55	56	56	56	58	66	0	0	0	0	0	0	0	0	347	377

Note: Ungraded students (UNGR) often are high school students whose anticipated years of graduation are unknown, or students with special needs - UNGR not included in Grade Combinations for 7-12, 9-12, etc.

Based on an estimate of births

Based on children already born

Based on students already enrolled

*Birth data provided by Public Health Vital Records Departments in each state.

** < 10 Not reported, to protect subgroups with fewer than 10 students.

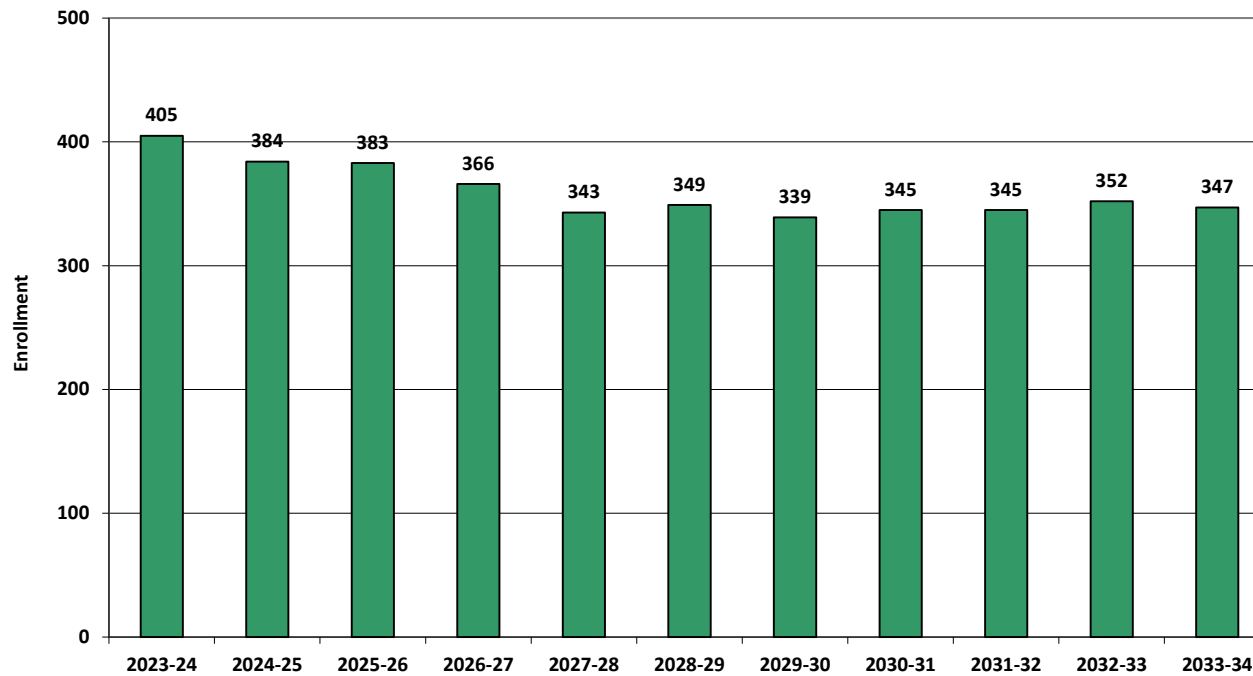
Projected Enrollment in Grade Combinations*						
School Year	PK-5	K-5	PK - 2	K-2	3-5	
2023-24	429	405	217	193	212	
2024-25	408	384	188	164	220	
2025-26	408	383	192	167	216	
2026-27	391	366	181	156	210	
2027-28	369	343	192	166	177	
2028-29	375	349	194	168	181	
2029-30	366	339	198	171	168	
2030-31	372	345	194	167	178	
2031-32	373	345	193	165	180	
2032-33	381	352	196	167	185	
2033-34	377	347	197	167	180	

Projected Percentage Changes			
School Year	K-5	Diff.	%
2023-24	405	0	0.0%
2024-25	384	-21	-5.2%
2025-26	383	-1	-0.3%
2026-27	366	-17	-4.4%
2027-28	343	-23	-6.3%
2028-29	349	6	1.7%
2029-30	339	-10	-2.9%
2030-31	345	6	1.8%
2031-32	345	0	0.0%
2032-33	352	7	2.0%
2033-34	347	-5	-1.4%
Change		-58	-14.3%

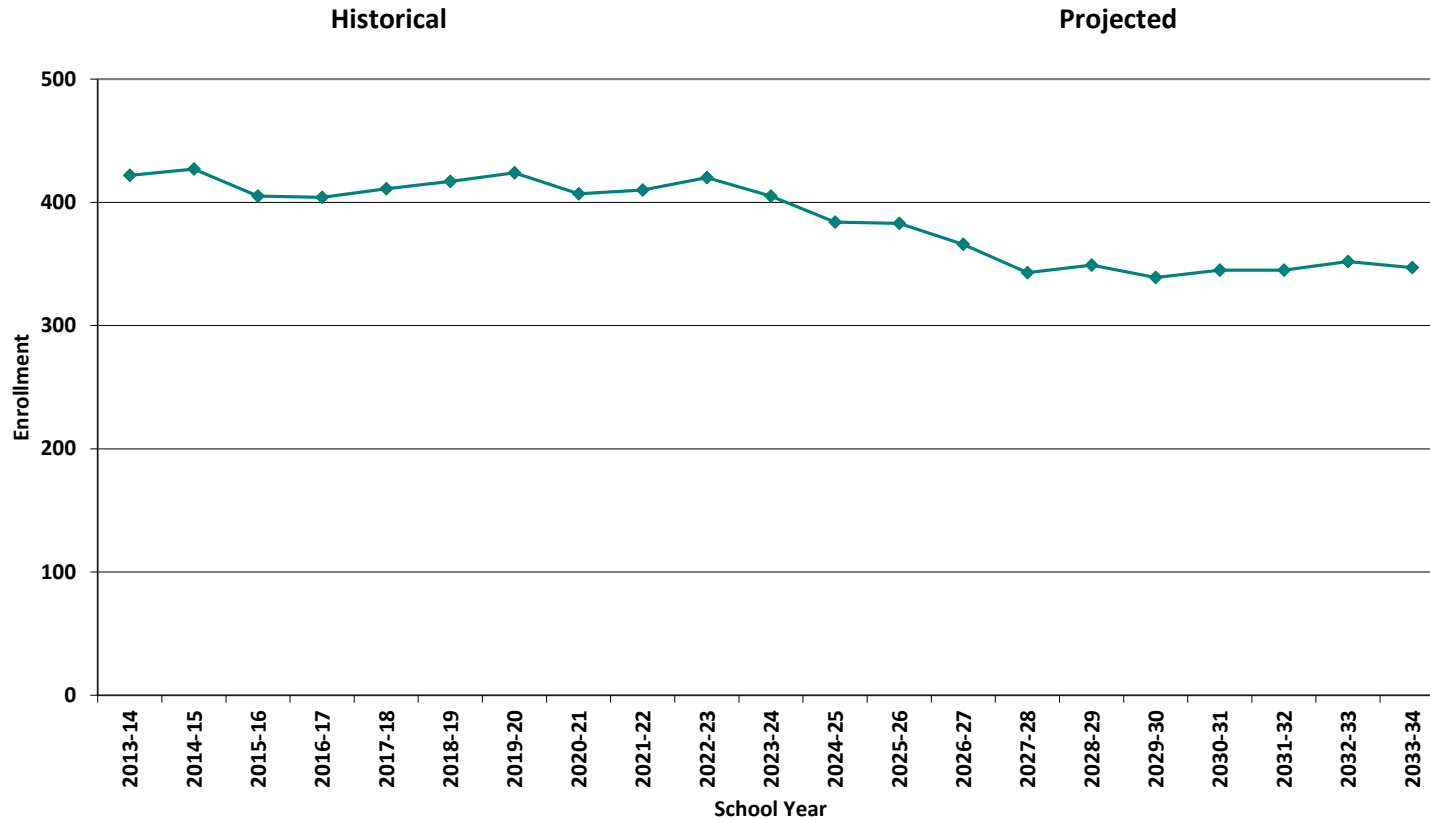
*Projections should be updated annually to reflect changes in in/out-migration of families, real estate sales, residential construction, births, and similar factors.

Projected Enrollment

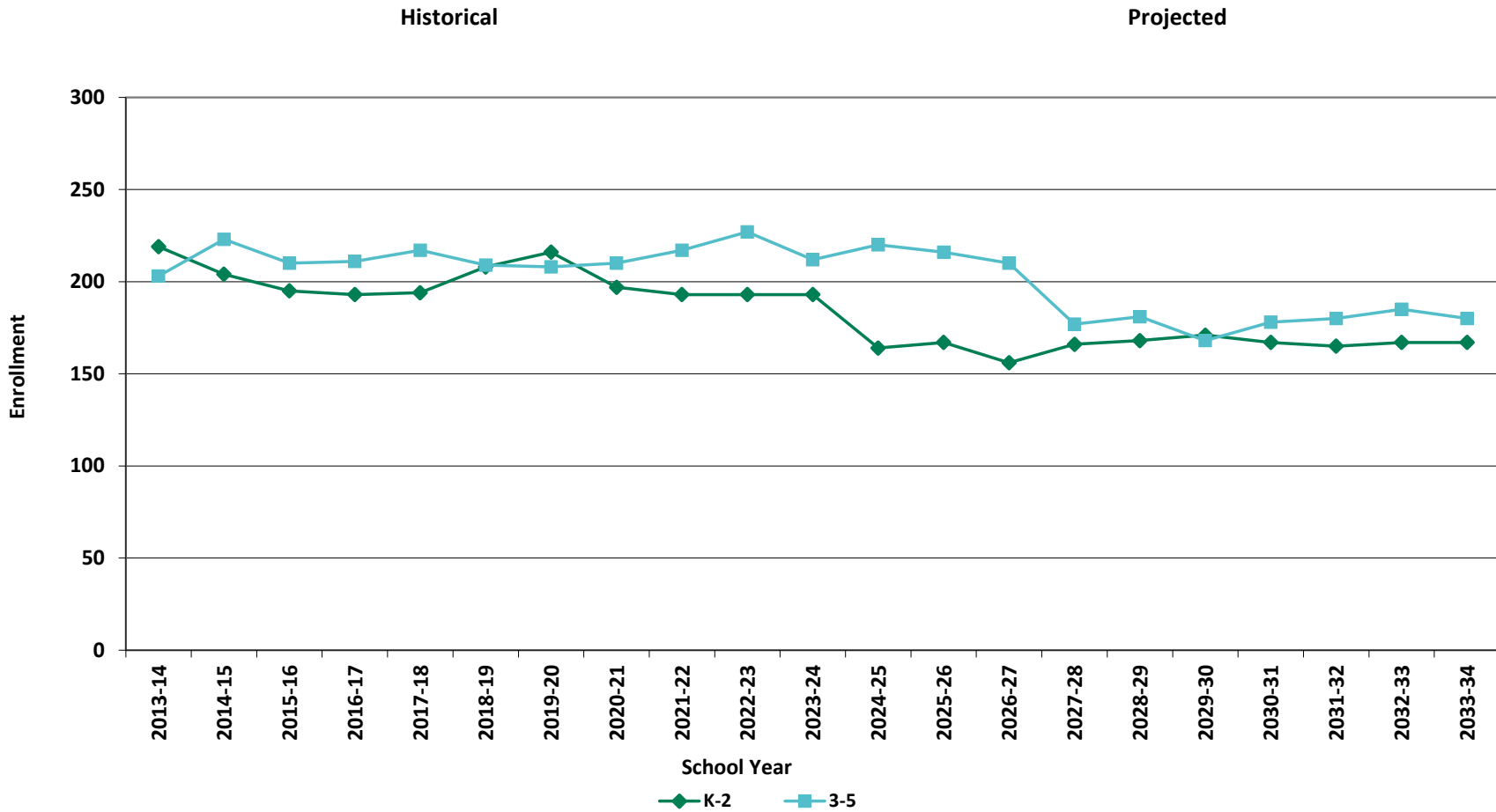
Grades K-5, School Years 2023-24 to 2033-34



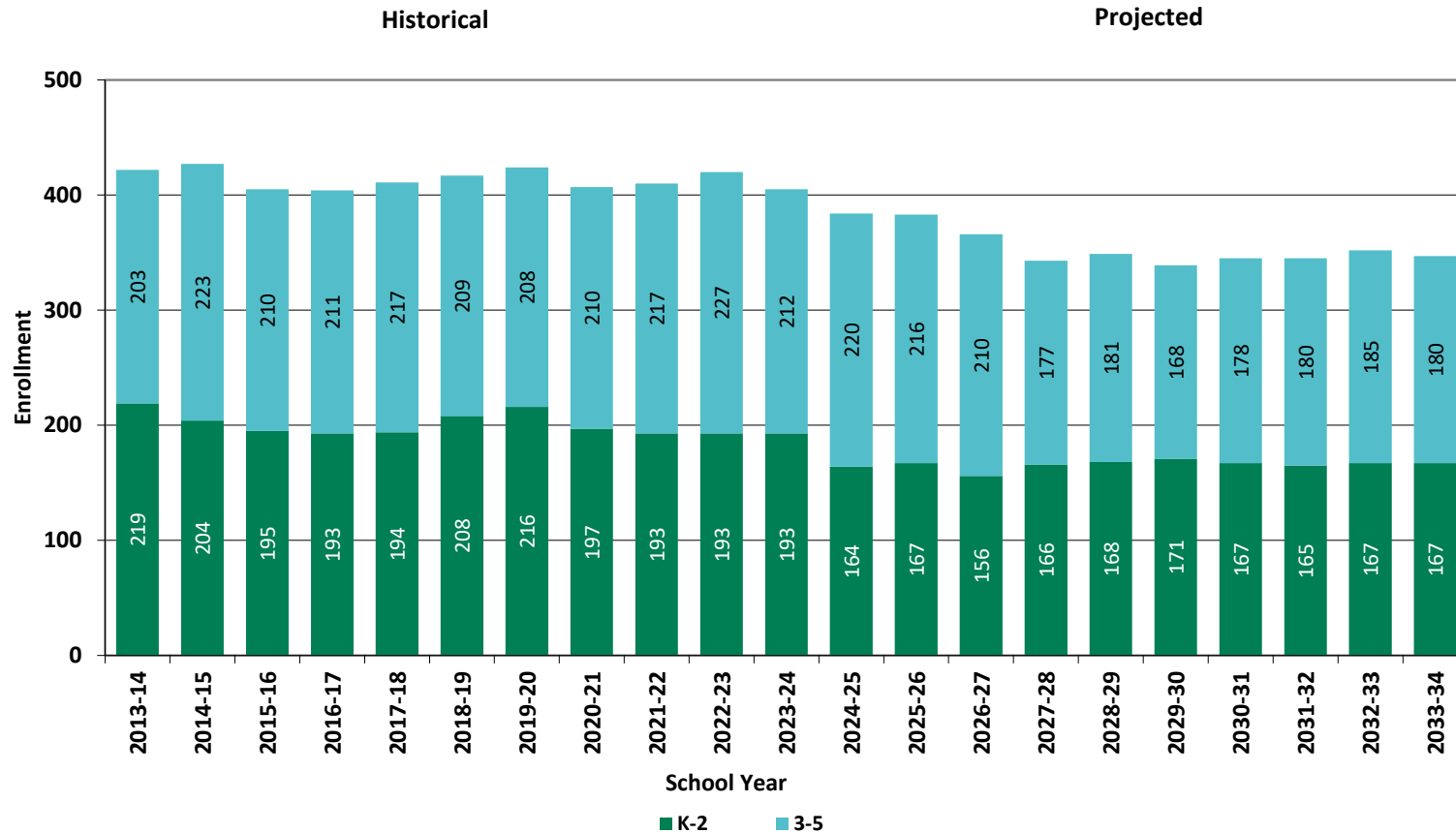
K-5 Historical & Projected Enrollment



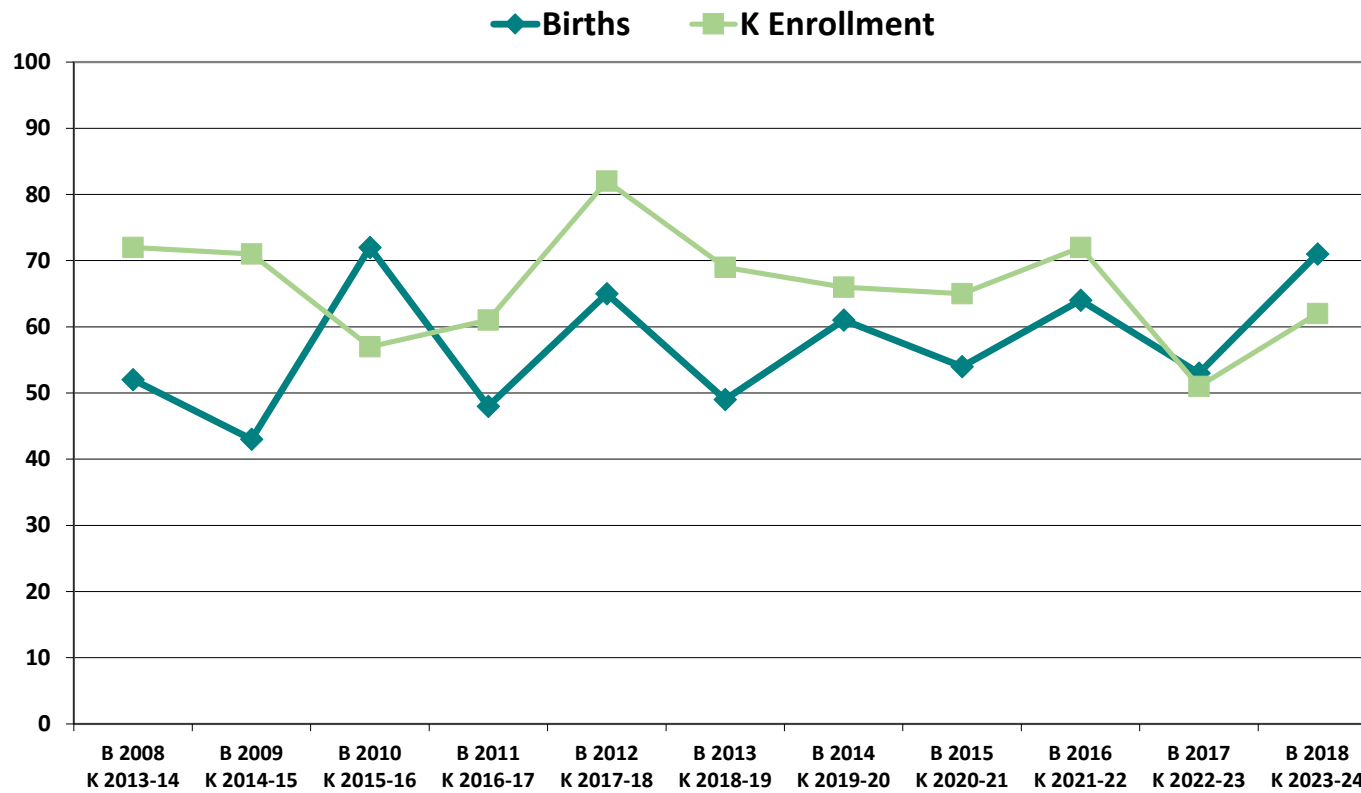
Historical & Projected Enrollments in Grade Combinations



Historical & Projected Enrollments in Grade Combinations



Birth-to-Kindergarten Relationship



Additional Information

Building Permits Issued (Source: HUD)		
Year	Single-Family	Multi-Units
2019	11	0
2020	13	4
2021	16	0
2022	15	4
2023	7 to date	0 to date

School Year	9 - 12 CTE	K - 5 Non-Public	K - 5 Choice-In	K - 5 Choice-Out	K - 5 Out-of-District SPED	K - 5 Homeschool
2019-20	n/a	n/a	n/a	n/a	n/a	n/a
2020-21	n/a	n/a	n/a	n/a	n/a	n/a
2021-22	n/a	n/a	n/a	n/a	n/a	n/a
2022-23	n/a	n/a	n/a	n/a	n/a	n/a
2023-24	n/a	< 10 **	22	< 10 **	< 10 **	20

*The above data was provided by the District, with the exception of building permit data (provided by HUD).

"n/a" signifies that information was not provided by District.

** < 10 Not reported, to protect subgroups with fewer than 10 students.

New England's PK-12 Enrollments Trends

From 2021 to 2030, the US Department of Education anticipates changes in PK-12 enrollment of -3.2% in the South, -6.0% in the West, -3.9% in the Midwest, -6.0% in the Northeast, and a total of -4.4% nationwide.

State	Fall 2021 PK - 12	Fall 2030 Projected	PK-12 Decline	% Change 2021-2030
USA	49,452,864	47,252,500	-2,200,364	-4.4%
CT	508,686	475,600	-33,086	-6.5%
ME	173,215	161,800	-11,415	-6.6%
MA	921,180	879,900	-41,280	-4.5%
NH	170,005	144,600	-25,405	-14.9%
RI	138,566	130,200	-8,366	-6.0%
VT	83,975	74,600	-9,375	-11.2%

Source: U.S. Department of Education, National Center for Education Statistics, Enrollment in public elementary and secondary schools, by region, state, and jurisdiction: Selected years, fall 1990 through fall 2030, Table 203.20, March 2023.

Although most New England Districts are seeing a decline in the number of births, NESDEC's experience indicates that the impact on enrollment varies from District to District. Almost half of New England Districts have been growing in PK-12 enrollment, and a similar number are declining (often in rural areas), with the other Districts remaining stable.

PROJECTION METHODOLOGY

Cohort component (survival) technique is a frequently used method of preparing enrollment forecasts. NESDEC uses this method, but modifies it in order to move away from forecasts that are wholly computer- or formula-driven. Such modification permits the incorporation of important, current district-specific demographic information into the generation of enrollment forecasts (such as in/out-migration of students, resident births, HUD-reported building permits, etc.). Percentages are calculated from the historical enrollment data to determine a reliable percentage of increase or decrease in enrollment between any two grades. For example, if 100 students enrolled in Grade 1 in 2022-23 increased to 104 students in Grade 2 in 2023-24, the percentage of survival would be 104%, or a ratio of 1.04. Ratios are calculated between each pair of grades or years in school over several recent years.

After study and analysis of the historical ratios, and based upon a reasonable set of assumptions regarding births, migration rates, retention rates, etc., ratios most indicative of future growth patterns are determined for each pair of grades. The ratios thus selected are applied to the present enrollment statistics to project into future years. The ratios are the key factors in the reliability of the projections, assuming validity of the data at the starting point.

RELIABILITY OF ENROLLMENT PROJECTIONS

Projections can serve as useful guides to school administrators for educational planning. Enrollment projections are more reliable in Years #1-4 in the future and less reliable in the "out-years." Projections six to ten years out may serve as a guide to future enrollments and are useful for planning purposes, but they should be viewed as subject to change given the likelihood of potential shifts in underlying assumptions/trends, such as student migration, births as they relate to Kindergarten enrollment, and other factors.

Projections that are based upon **the children who already are in the district** (the current K-12 population only) will be the most reliable. The second level of reliability will be for those children already **born into the community but not yet old enough to be in school**. The least reliable category is the group for which an estimate must be made **to predict the number of births**, thereby adding additional uncertainty. See these three multi-colored groupings on the "Projected Enrollment" tab.

Annual updates allow for early identification of recent changes in historical trends. When the actual enrollment in a grade is significantly different (higher or lower) from the projected number, it is important (yet difficult) to determine whether this is a one-year aberration or whether a new trend may have begun. **In light of this possibility, NESDEC urges all school districts to have updated enrollment forecasts developed by NESDEC each October.** This service is available at no cost to affiliated school districts.

USING THIS INFORMATION ELECTRONICALLY

If you would like to extract the information contained in this report for your own documents or presentations, you can use screenshots, which can be inserted into PowerPoint slides, Word documents, etc. Because screenshots create graphics, the image is not editable. Please feel free to contact us if you need assistance in this matter, by phone (508-481-9444) or by email (ep@nesdec.org).