



**Belgrade Public Schools**

**RSU #18**

**Belgrade, ME**

**School Year 2023-24 Enrollment Projection Report**

*Copyright, New England School Development Council, 2023*

# Table of Contents

Section	Page
Enrollment Summary.....	1
Historical Enrollment Table.....	2
Historical Enrollment Graph.....	3
Projected Enrollment Table.....	4
Projected Enrollment Graph.....	5
Historical & Projected Enrollment Graph.....	6
Historical & Projected Enrollment in Grade Combinations Line Graph.....	7
Historical & Projected Enrollment in Grade Combinations Stacked Column Graph.....	8
Birth to Kindergarten Relationship Graph.....	9
Additional Information .....	10
New England's PK-12 Enrollment Trends.....	11
Methodology, Reliability and Use of this Document.....	12

# Belgrade, ME Enrollment Summary

NESDEC is pleased to send you this report displaying the past, present, and projected enrollments for your District. It is important to update enrollment projections every year to identify changes in enrollment patterns. Ten-year projections are designed to provide your District with yearly, up-to-date enrollment information that can be used by boards and administrators for effective planning and allocation of resources.

Included in this report are graphs representing historical and projected grade-by-grade enrollments, as well as historical and projected enrollments in grade combinations. We received the enrollment data from the District, and we assume that the method of collecting this data has been consistent from year to year.

Enrollment projections are more reliable in Years #1-4 in the future and less reliable in the “out-years.” Projections six to ten years out may serve as a guide to future enrollments and are useful for planning purposes. In light of this, NESDEC has added a “Spring Update Refresher” enrollment projection at no cost to affiliates. For more information, please refer to the Methodology, Reliability and Use of this Document section.

This is the first enrollment projection for Belgrade. Next fall, we can determine the accuracy of NESDEC’s projection for 2023-24.

Births remain stable.

Over the next three years, Grades K-5 enrollments are projected to decrease by 23 students as students move through the grades.

# Historical Enrollment

School District: Belgrade, ME

11/15/2023

Historical Enrollment By Grade																			
Birth Year	Births*	School Year	PK	K	1	2	3	4	5	6	7	8	9	10	11	12	UNGR	K-5	PK-5
2008	33	2013-14	26	42	52	57	45	49	40	0	0	0	0	0	0	0	0	285	311
2009	49	2014-15	28	42	39	57	53	52	47	0	0	0	0	0	0	0	0	290	318
2010	35	2015-16	20	41	38	38	54	48	49	0	0	0	0	0	0	0	0	268	288
2011	34	2016-17	24	26	39	41	39	55	46	0	0	0	0	0	0	0	0	246	270
2012	28	2017-18	22	40	31	42	35	40	50	0	0	0	0	0	0	0	0	238	260
2013	33	2018-19	21	39	37	29	44	35	41	0	0	0	0	0	0	0	0	225	246
2014	33	2019-20	27	36	40	31	25	44	29	0	0	0	0	0	0	0	0	205	232
2015	39	2020-21	24	26	35	44	32	26	35	0	0	0	0	0	0	0	0	198	222
2016	32	2021-22	19	35	35	40	43	40	33	0	0	0	0	0	0	0	0	226	245
2017	29	2022-23	17	31	32	36	40	42	41	0	0	0	0	0	0	0	0	222	239
2018	32	2023-24	26	37	27	30	38	41	59	0	0	0	0	0	0	0	0	232	258

\*Birth data provided by Public Health Vital Records Departments in each state.

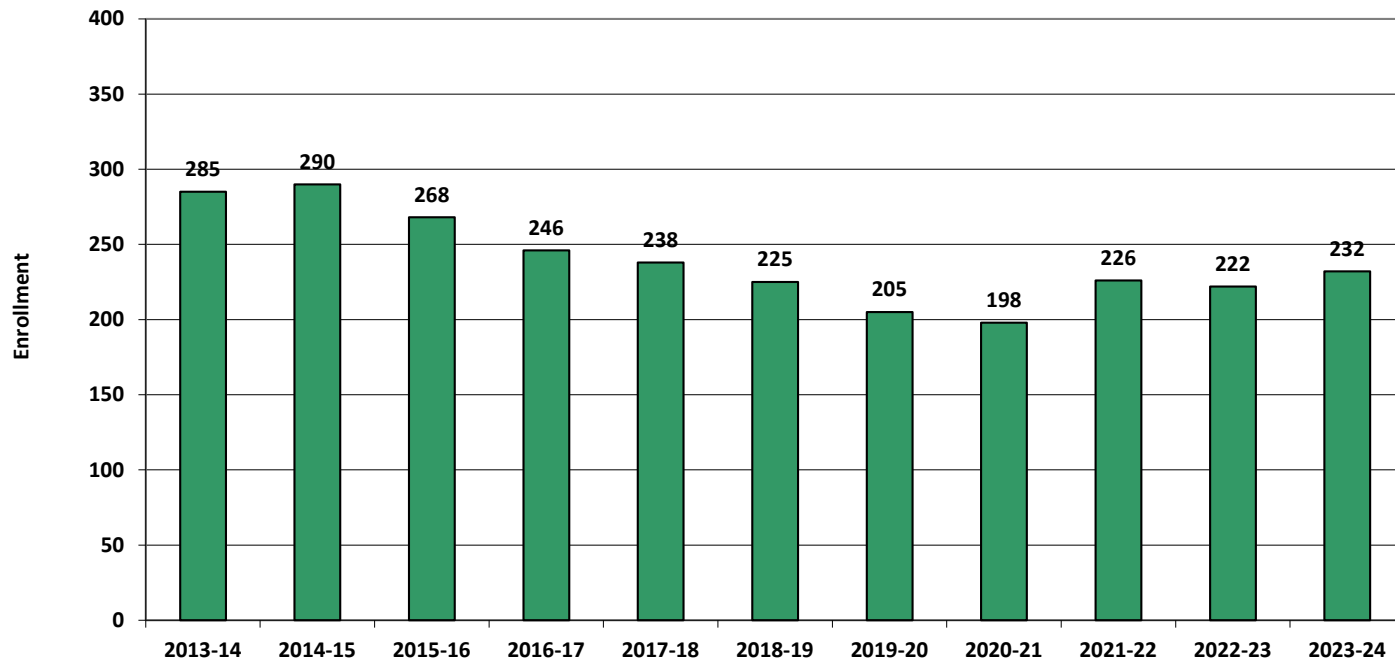
\*\* < 10 Not reported, to protect subgroups with fewer than 10 students.

Historical Enrollment in Grade Combinations						
School Year	PK-5	K-5	PK-K	K-2	3-5	
2013-14	311	285	68	151	134	
2014-15	318	290	70	138	152	
2015-16	288	268	61	117	151	
2016-17	270	246	50	106	140	
2017-18	260	238	62	113	125	
2018-19	246	225	60	105	120	
2019-20	232	205	63	107	98	
2020-21	222	198	50	105	93	
2021-22	245	226	54	110	116	
2022-23	239	222	48	99	123	
2023-24	258	232	63	94	138	

Historical Percentage Changes			
School Year	K-5	Diff.	%
2013-14	285		
2014-15	290	5	1.8%
2015-16	268	-22	-7.6%
2016-17	246	-22	-8.2%
2017-18	238	-8	-3.3%
2018-19	225	-13	-5.5%
2019-20	205	-20	-8.9%
2020-21	198	-7	-3.4%
2021-22	226	28	14.1%
2022-23	222	-4	-1.8%
2023-24	232	10	4.5%
Change		-53	-18.6%

# Historical Enrollment

Grades K-5, School Years 2013-14 to 2023-24



# Projected Enrollment

School District: Belgrade, ME

11/15/2023

Enrollment Projections By Grade*																				
Birth Year	Births*		School Year	PK	K	1	2	3	4	5	6	7	8	9	10	11	12	UNGR	K-5	PK-5
2018	32		2023-24	26	37	27	30	38	41	59	0	0	0	0	0	0	0	0	232	258
2019	34		2024-25	26	37	37	27	30	40	45	0	0	0	0	0	0	0	0	216	242
2020	37		2025-26	26	40	37	37	27	31	44	0	0	0	0	0	0	0	0	216	242
2021	31		2026-27	27	33	40	37	37	28	34	0	0	0	0	0	0	0	0	209	236
2022	38	(prov.)	2027-28	27	41	33	40	37	38	31	0	0	0	0	0	0	0	0	220	247
2023	34	(est.)	2028-29	27	37	41	33	40	38	42	0	0	0	0	0	0	0	0	231	258
2024	35	(est.)	2029-30	28	38	37	41	33	42	42	0	0	0	0	0	0	0	0	233	261
2025	35	(est.)	2030-31	28	38	38	37	41	34	46	0	0	0	0	0	0	0	0	234	262
2026	35	(est.)	2031-32	28	37	38	38	37	43	37	0	0	0	0	0	0	0	0	230	258
2027	35	(est.)	2032-33	29	38	37	38	38	38	47	0	0	0	0	0	0	0	0	236	265
2028	35	(est.)	2033-34	30	38	38	37	38	40	42	0	0	0	0	0	0	0	0	233	263

Note: Ungraded students (UNGR) often are high school students whose anticipated years of graduation are unknown, or students with special needs - UNGR not included in Grade Combinations for 7-12, 9-12, etc.

Based on an estimate of births

Based on children already born

Based on students already enrolled

\*Birth data provided by Public Health Vital Records Departments in each state.

\*\* < 10 Not reported, to protect subgroups with fewer than 10 students.

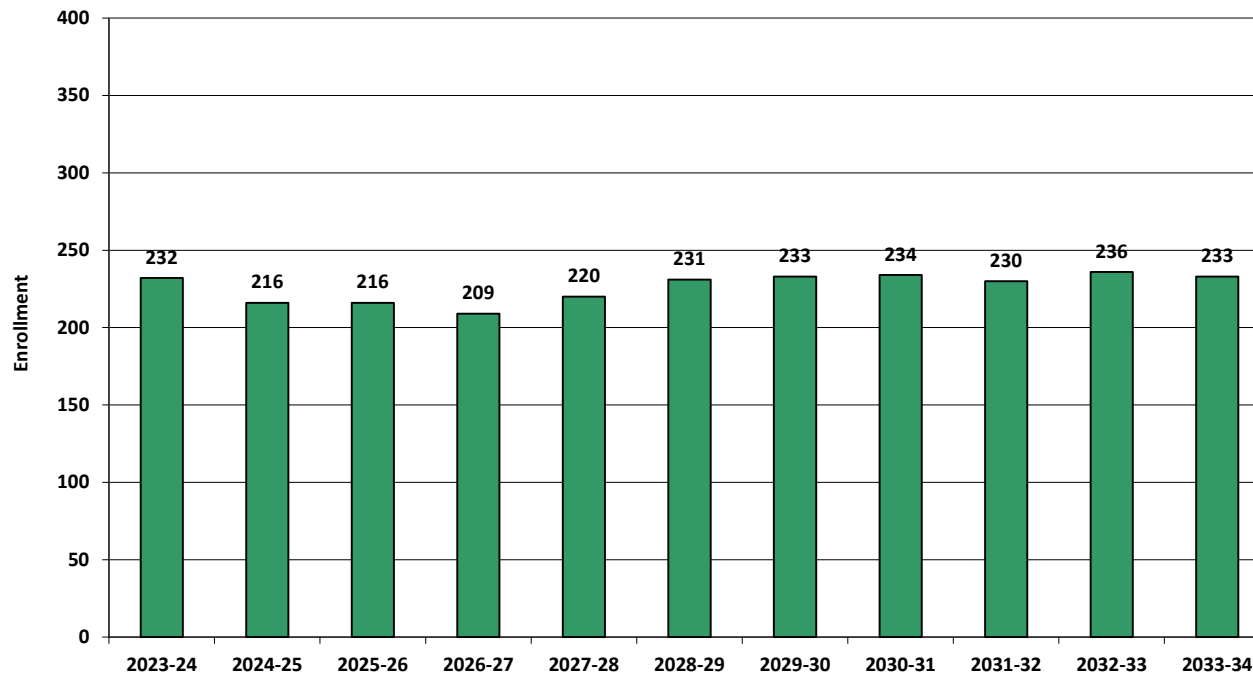
Projected Enrollment in Grade Combinations*							
School Year	PK-5	K-5	PK-K	K-2	3-5		
2023-24	258	232	63	94	138		
2024-25	242	216	63	101	115		
2025-26	242	216	66	114	102		
2026-27	236	209	60	110	99		
2027-28	247	220	68	114	106		
2028-29	258	231	64	111	120		
2029-30	261	233	66	116	117		
2030-31	262	234	66	113	121		
2031-32	258	230	65	113	117		
2032-33	265	236	67	113	123		
2033-34	263	233	68	113	120		

Projected Percentage Changes			
School Year	K-5	Diff.	%
2023-24	232	0	0.0%
2024-25	216	-16	-6.9%
2025-26	216	0	0.0%
2026-27	209	-7	-3.2%
2027-28	220	11	5.3%
2028-29	231	11	5.0%
2029-30	233	2	0.9%
2030-31	234	1	0.4%
2031-32	230	-4	-1.7%
2032-33	236	6	2.6%
2033-34	233	-3	-1.3%
<b>Change</b>		<b>1</b>	<b>0.4%</b>

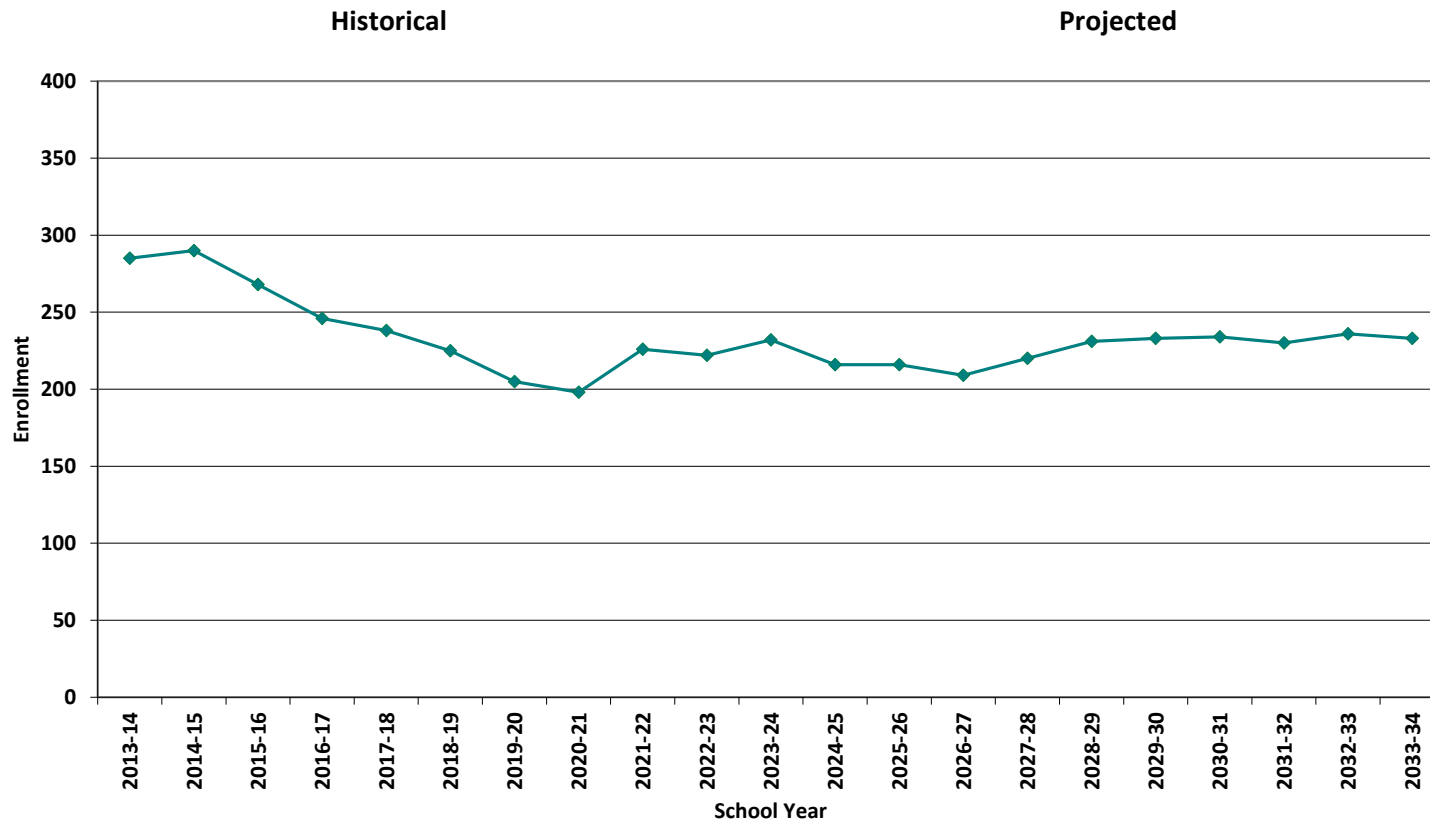
\*Projections should be updated annually to reflect changes in in/out-migration of families, real estate sales, residential construction, births, and similar factors.

# Projected Enrollment

### Grades K-5, School Years 2023-24 to 2033-34

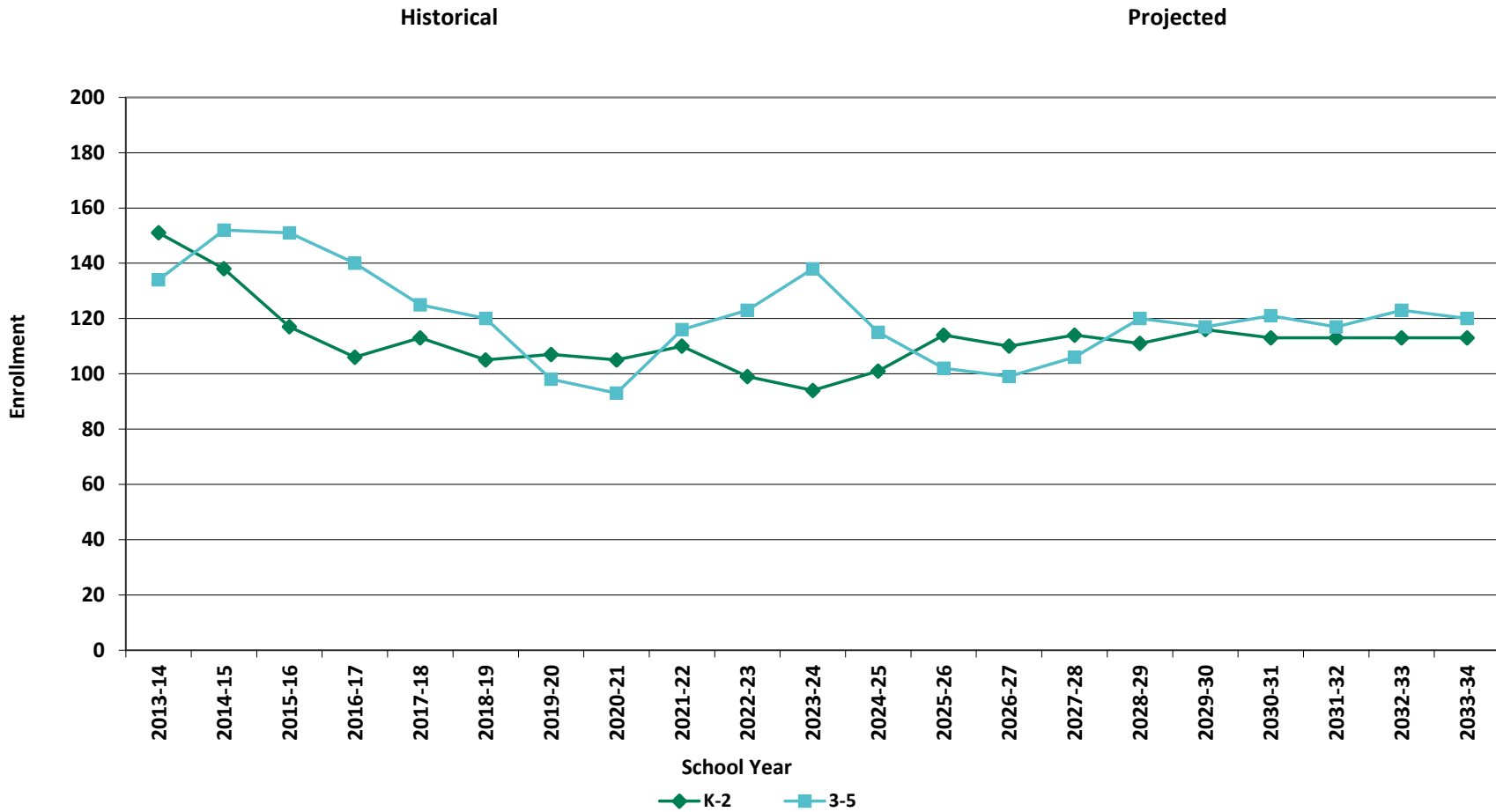


# K-5 Historical & Projected Enrollment

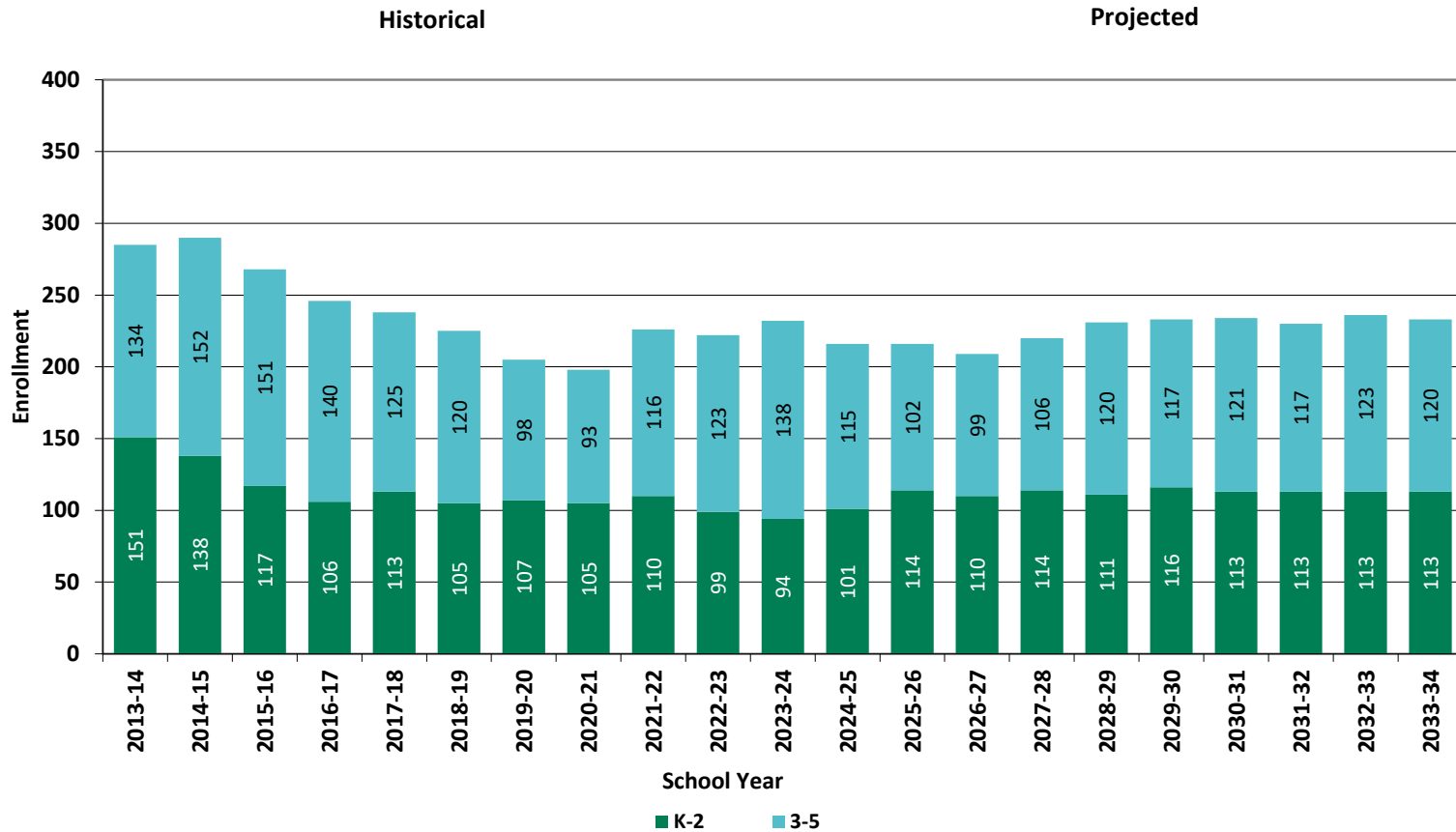




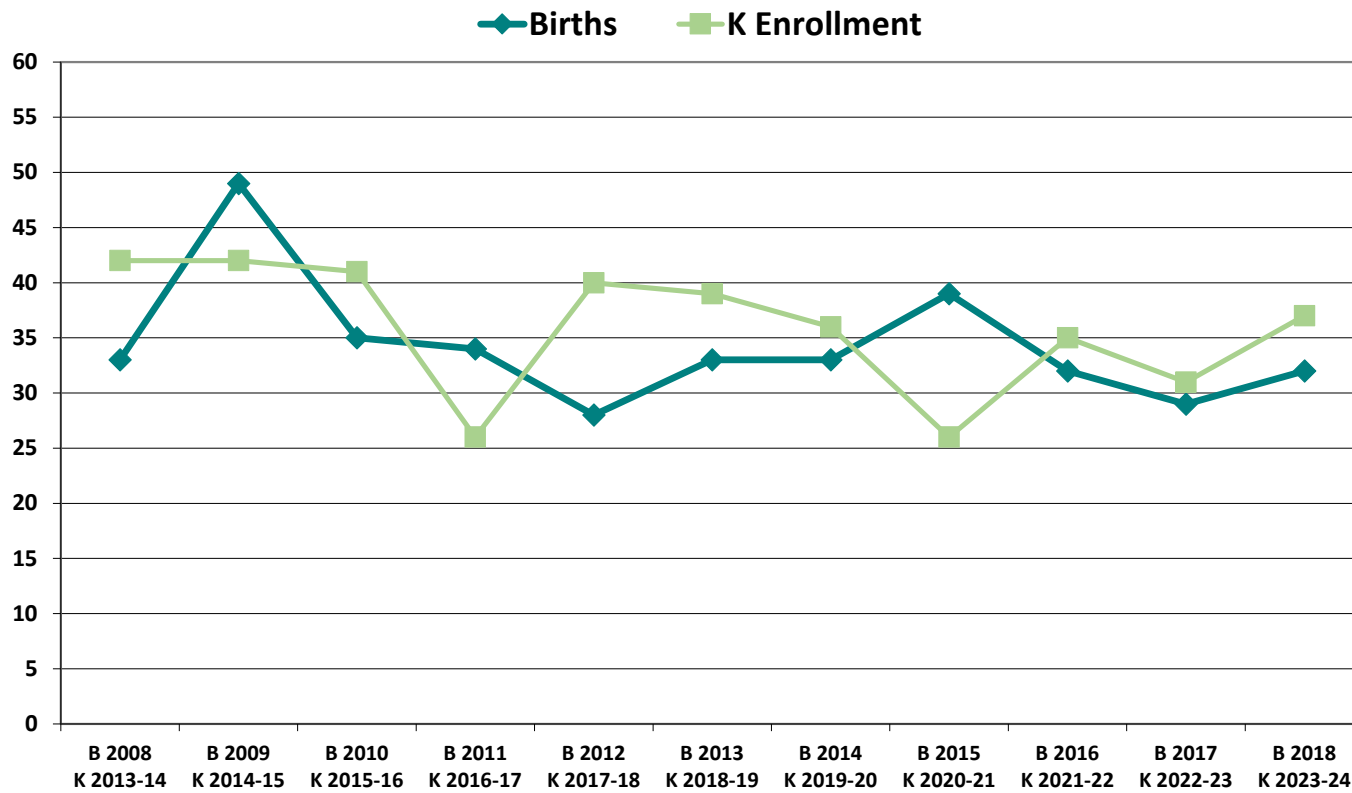
# Historical & Projected Enrollments in Grade Combinations



# Historical & Projected Enrollments in Grade Combinations



# Birth-to-Kindergarten Relationship



## Additional Information

Building Permits Issued (Source: HUD)		
Year	Single-Family	Multi-Units
2019	B0, R5	0
2020	B8, R6	0
2021	B22, R11	0
2022	B88, R7	0
2023	B57, R7 to date	0 to date

Note: B - Belgrade, R - Rome

School Year	9 - 12 CTE	K - 5 Non-Public	K - 5 Choice-In	K - 5 Choice-Out	K - 5 Out-of-District SPED	K - 5 Homeschool
2019-20	n/a	n/a	n/a	n/a	n/a	n/a
2020-21	n/a	n/a	n/a	n/a	n/a	n/a
2021-22	n/a	n/a	n/a	n/a	n/a	n/a
2022-23	n/a	n/a	n/a	n/a	n/a	n/a
2023-24	n/a	< 10 **	< 10 **	< 10 **	< 10 **	21

\*The above data was provided by the District, with the exception of building permit data (provided by HUD).

"n/a" signifies that information was not provided by District.

\*\* < 10 Not reported, to protect subgroups with fewer than 10 students.

## New England's PK-12 Enrollments Trends

From 2021 to 2030, the US Department of Education anticipates changes in PK-12 enrollment of -3.2% in the South, -6.0% in the West, -3.9% in the Midwest, -6.0% in the Northeast, and a total of -4.4% nationwide.

State	Fall 2021 PK - 12	Fall 2030 Projected	PK-12 Decline	% Change 2021-2030
USA	49,452,864	47,252,500	-2,200,364	-4.4%
CT	508,686	475,600	-33,086	-6.5%
ME	173,215	161,800	-11,415	-6.6%
MA	921,180	879,900	-41,280	-4.5%
NH	170,005	144,600	-25,405	-14.9%
RI	138,566	130,200	-8,366	-6.0%
VT	83,975	74,600	-9,375	-11.2%

**Source:** U.S. Department of Education, National Center for Education Statistics, Enrollment in public elementary and secondary schools, by region, state, and jurisdiction: Selected years, fall 1990 through fall 2030, Table 203.20, March 2023.

Although most New England Districts are seeing a decline in the number of births, NESDEC's experience indicates that the impact on enrollment varies from District to District. Almost half of New England Districts have been growing in PK-12 enrollment, and a similar number are declining (often in rural areas), with the other Districts remaining stable.